

1306 N 10<sup>th</sup> St  
Spearfish, SD 57783  
(605)642-2827

www.spearfishseniorcenter.com

Senior Center Hours  
Mon-Fri  
8:30am-4pm

Medical Equipment  
Availability  
Mon-Fri  
9am-Noon

*Those who give  
of their time are  
truly generous.*



# FEBRUARY 2025

## Spearfish Senior Center Newsletter



Spearfish Senior Center  
Board Meeting Minutes  
January 13, 2025



**Present:** President Ginger Childers, Vice President Taffy Tucker, Secretary Jane Rutherford, Dennis Dahl, Marla Loken, Carol Vercoe, Carol Hess, LeRoy Lanphear, Doug Schmit, Treasurer Alyce Harich, and Executive Director Stephanie Crago. The meeting was opened by reciting the Pledge of Allegiance. The minutes of the last meeting were accepted as written.

**Treasurer's Report:** The Treasurer's Report was accepted as presented.

**Ways and Means:** Building rental income for the month of December was \$180. January is projected to be approximately \$300.

**Director's Report:** 13 new members joined in December. The Cookie Walk held on December 21st went well and the income was \$2405. Income from the January birthday luncheon was \$468 and about 60 people attended. Our medical equipment program continues to do well. Stephanie is continuing work on the Nexus Grant through the South Dakota Department of Health. There will be a Valentine's Day Dance on February 14th with music by the Medicare Swing Band. The Senior Center will again be hosting "Souper Stars" on March 18th.

**Old Business:** Doug and Dennis gave an update on the insulating roof/ice buildup. Dakota Insulation was consulted, and after their assessment, will provide recommendations and ideas on possible solutions.

**New Business:** Taffy made a motion to accept the preliminary 2025 budget as presented. Dennis seconded. All in favor. In addition to clearing our parking lot, our snow removal crew will also shovel the sidewalks and entrance to the Senior Center. There will be No Entry, and the side door to the back parking lot will be locked due to the ice buildup. This is for the safety of all our members.

The board moved to an Executive Session.

Meeting adjourned.

Jane Rutherford, *Secretary*



BOARD MEETINGS ARE HELD THE 2<sup>ND</sup> MONDAY OF EVERY MONTH AT 9:30AM.  
BOARD MEETINGS ARE OPEN TO ALL SENIOR CENTER MEMBERS.





# CARAMEL ROLLS & COFFEE

**Thursdays 8:30-10:30AM**

\*Limit of 4 rolls until 10:30am for take-out so we can make sure & have enough for everyone.

*Open to the public! Invite your friends!*

*Invite your neighbors, family, & friends!*



## Peaceful Pines™ SENIOR LIVING | SPEARFISH

Independent Living | Assisted Living | Memory Care

### Experience Exceptional

Experience Exceptional at Peaceful Pines. We provide high quality care driven by technology with an array of choice amenities, you will feel right at home! Call to schedule your tour today!

Contact Us Today

605.559.0257 | PEACEFULPINES.NET  
8800 St. Onge Road, Spearfish, SD



## MONTHLY FUNDRAISING BREAKFAST

**Saturday, FEB. 22<sup>nd</sup>  
7:30am-10am**

**MENU:** Pancakes, sausage patty, scrambled eggs OR Biscuits with sausage gravy, scrambled eggs served with coffee & orange juice. \$8 donation.

Our breakfasts are open to the public, please bring your friends, family, & neighbors to this great fundraiser! Monthly breakfasts are a great opportunity to volunteer here at the center. If you are interested in helping, please contact Karen Buchholz or Stephanie!



**Make plans to attend the Fundraising Birthday Luncheon!  
FEB 7<sup>th</sup> at 11:30AM**

**MENU:** Pork loin with dressing, mashed potatoes, gravy, carrots, & dessert. \$8 donation for meal includes coffee!

- ❖ Guest Speaker: Leacey Brown with SDSU
- ❖ Roses by Zonta for all members who are Birthday honorees!
- ❖ Special Music by Ivan Kloefkorn & Arne Koski.
- ❖ Members who celebrate a B-Day this month eat for **FREE!** Open to the public!

**Thank you, Sheila & Ray Kinghorn, for the donation of hamburger meat to our Senior Center. This will make many meals for four fundraisers!**

**Would you like the monthly newsletter e-mailed to you? If so, e-mail us at [srcenternewsletter@gmail.com](mailto:srcenternewsletter@gmail.com)**



# FEBRUARY

# HALL

Sun	Mon	Tue	Wed	Thu	Fri	Sat
<p><b>Senior Center Hours:</b>  <b>Mon-Fri</b>  <b>8:30am-4:00pm</b>  <b>CLOSED Sat &amp; Sun</b>                      (Unless special event is scheduled)</p>						<p><b>1</b>                      12:30pm Duplicate Bridge</p>
<p><b>2</b></p>	<p><b>3</b>                      8:30am Snooker                      1pm Whist</p>	<p><b>4</b> 8:30am Snooker                      9am Hand &amp; Foot  <b>9am-11am Tech Help</b>                      12:30pm Bridge                      12pm 10 Point Pitch                      1pm Chess Club  <b>Tech Help with Bennett 1-3PM</b>  <b>*must be signed up*</b></p>	<p><b>5</b>                      8:30am Snooker                      9am BUNCO                      1pm Pinochle                      1pm Mahjong                      5:30pm Mahjong</p>	<p><b>6</b> 8:30am Snooker  <b>8:30-10:30am Caramel Rolls/Coffee</b>                      12:30pm Duplicate Bridge                      1pm Cribbage</p>	<p><b>7</b>                      8:30am Snooker                      1pm Pinochle                      1pm Mahjong</p>	<p><b>8</b>                      12:30pm Duplicate Bridge</p>
<p><b>9</b></p>	<p><b>10</b>                      8:30am Snooker                      1pm Quilters/Crafters                      1pm Whist</p>	<p><b>11</b> 8:30am Snooker                      9am Hand &amp; Foot  <b>9am-11am Tech Help</b>                      12:30pm Bridge                      12pm 10 Point Pitch                      1pm Chess Club</p>	<p><b>12</b>                      8:30am Snooker                      9am BUNCO                      1pm Pinochle                      1pm Mahjong                      5:30pm Mahjong</p>	<p><b>13</b> 8:30am Snooker  <b>8:30-10:30am Caramel Rolls/Coffee</b>                      12:30pm Duplicate Bridge                      1pm Cribbage</p>	<p><b>14</b>                      8:30am Snooker                      1pm Pinochle                      1pm Mahjong</p>	<p><b>15</b>                      12:30pm Duplicate Bridge</p>
<p><b>16</b></p>	<p><b>17</b>                      8:30am Snooker                      1pm Quilters/Crafters                      1pm Whist</p>	<p><b>18</b> 8:30am Snooker                      9am Hand &amp; Foot  <b>9am-11am Tech Help</b>                      12:30pm Bridge                      12pm 10 Point Pitch                      1pm Chess Club</p>	<p><b>19</b>                      8:30am Snooker                      9am BUNCO                      1pm Pinochle                      1pm Mahjong                      5:30pm Mahjong</p>	<p><b>20</b> 8:30am Snooker  <b>8:30-10:30am Caramel Rolls/Coffee</b>                      12:30pm Duplicate Bridge                      1pm Cribbage</p>	<p><b>21</b>                      8:30am Snooker                      1pm Pinochle                      1pm Mahjong</p>	<p><b>22</b>                      12:30pm Duplicate Bridge</p>
<p><b>23</b></p>	<p><b>24</b>                      8:30am Snooker                      1pm Whist</p>	<p><b>25</b> 8:30am Snooker                      9am Hand &amp; Foot  <b>9am-11am Tech Help</b>                      12:30pm Bridge                      12pm 10 Point Pitch                      1pm Chess Club</p>	<p><b>26</b>                      8:30am Snooker                      9am BUNCO                      1pm Pinochle                      1pm Mahjong                      5:30pm Mahjong</p>	<p><b>27</b>                      8:30am Snooker  <b>8:30-10:30am Caramel Rolls/Coffee</b>                      12:30pm Duplicate Bridge                      1pm Cribbage</p>	<p><b>28</b>                      8:30am Snooker                      1pm Pinochle                      1pm Mahjong</p>	

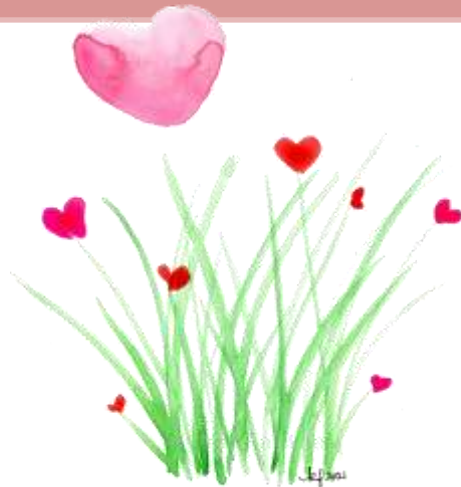


**Reminder:**

If school closes due to **INCLEMENT WEATHER CONDITIONS** the Senior Center is **ALSO CLOSED**, or if school starts **LATE**, the Center also opens **LATE**.

Also, beware of snow and ice in the parking lot! The parking lot has areas where when snow melts it turns to **ICE** overnight—be very careful! We do our best to keep sidewalks clear but ice in the parking lot does happen.

Please use extreme caution. *Everyone be safe this winter!*



**Digits Nail Spa is coming to our Senior Center!**

Where beauty meets wellness! Owned by RN Marybeth Runnels, who specializes in nail care for seniors, diabetics, & problem nails.

- **Nail trim only** – 10 min. \$15

- **Quick & Ready Pedi** - 20 min. Includes salt soak, nail trim, cuticle grooming, moisturizing lotion, and standard polish - \$25

- **Sleek & Steady Pedi** - 50 min. Includes salt soak, nail trim, cuticle grooming, callus treatment, exfoliating scrub, moisturizing lotion, and standard polish - \$40

*She accepts cash, check, or credit card.*

**\*CALL STEPHANIE TO SIGN UP 605-642-2827**

**Valentine's Dance  
Sponsored by:  
Spearfish Canyon  
Healthcare**



**Come listen & dance to the Medicare Swing Band on Friday, February 14<sup>th</sup> at 1:30PM.**



*Free will donation at the door. Coffee & refreshments will be served. Open to the public. Invite your friends, family, & neighbors!*

Tuesday, February 4, the Spearfish Area Historical Society's program is, "Dr. Walter Higbee, Advancing Disabilities Rights at BHTC," presented by Paul Higbee.

The program begins at 7:00pm at the Senior Center. This program is open to the public. Please join us. Questions, call 605-641-8563

**SAVE THE DATE:  
SPRING FUNDRAISING RUMMAGE SALE  
MARCH 13-15<sup>th</sup> 2025**

We will be needing volunteers! Sign-up sheet will be up starting March 4<sup>th</sup>, please consider helping with this important fundraiser for our Center.

# Senior Center Hours:

**MONDAY-FRIDAY**  
**8:30AM-4:00PM**  
**CLOSED Sat & Sun**

(Unless special event is scheduled)



# FEBRUARY

Sun	Mon	Tue	Wed	Thu	Fri	Sat	
<p><b>Senior Center Hours:</b>                      Mon-Fri                      8:30am-4:00pm                      CLOSED Sat &amp; Sun                      (Unless special event is scheduled)</p>						1	
2	<p>3                      8:30AM Exercise Group                      1pm Quilters/Crafters</p>	<p>4                      9:30-11AM Chorus                      12:30-1:30pm Advanced Line Dancing                      1:45-2:45pm Beginning Line Dancing</p>	<p>5                      10am Improver Line Dancing                      11am-11:45am Challenge Routines                      1pm Texas Holdem  <b>QH Private Rental</b></p>	<p>6                      9-10am Intermediate Line Dancing                      10:30AM Full body Exercise w/Odessa                      12:30pm Dominoes</p>	<p>7  <b>Birthday Luncheon 11:30AM</b>  <i>Guest Speaker: Artemis House</i>  <b>1:30PM BH Better Breathers Group</b>                      7pm Square Dance</p>	8	
9	<p>10                      8:30AM Exercise Group                      9:30AM Board Meeting                      1pm Quilters/Crafters</p>	<p>11                      9:30-11AM Chorus                      12:30-1:30pm Advanced Line Dancing                      1:45-2:45pm Beginning Line Dancing</p>	<p>12                      10am Improver Line Dancing                      11am-11:45am Challenge Routines                      1pm Texas Holdem</p>	<p>13                      9-10am Intermediate Line Dancing                      10:30AM Full body Exercise w/Odessa                      12:30pm Dominoes</p>	<p>14  <b>Valentine's Dance With the Medicare Swing Band 1:30PM</b></p>	15	
16	<p>17                      8:30AM Exercise Group  <b>1pm Retired School Personnel Meeting</b></p>	<p>18                      9:30-11AM Chorus                      12:30-1:30pm Advanced Line Dancing                      1:45-2:45pm Beginning Line Dancing</p>	<p>19                      10am Improver Line Dancing                      11am-11:45am Challenge Routines                      1pm Texas Holdem</p>	<p>20                      9-10am Intermediate Line Dancing                      10:30AM Full body Exercise w/Odessa                      12:30pm Dominoes</p>	<p>21                      7pm Square Dance</p>	<p>22  <b>Fundraising Breakfast 7:30AM-10AM</b>                      QH Private Rental</p>	
23	<p>24                      8:30AM Exercise Group                      1pm Quilters/Crafters</p>	<p>25                      9:30-11AM Chorus                      12:30-1:30pm Advanced Line Dancing                      1:45-2:45pm Beginning Line Dancing</p>	<p>26                      10am Improver Line Dancing                      11am-11:45am Challenge Routines                      1pm Texas Holdem</p>	<p>27                      9-10am Intermediate Line Dancing                      10:30AM Full body Exercise w/Odessa                      12:30pm Dominoes</p>	<p>28  <b>Nail Trims/Pedicures 9AM-4PM</b>  <b>*must be signed up</b></p>		



Check out our Facebook Page for more pictures of events!



Artemis House was our guest speaker in January.



Happy Birthday to ALL our JANUARY members!



Jane Mattson, Carol Vercoe, & Taffy Tucker dishing up another great lunch!



Our Senior Center Line Dancers spreading Christmas cheer by dancing on a caramel roll Thursday!



# hello February



If you would like to use the Prairie Hills Transit bus to attend one of our events, please let Stephanie know. We have vouchers you can use to pay for your bus fee to get to and from the Senior Center. We thank Pioneer Bank & Trust for making this free transportation opportunity available to our members!



There was an incredible turnout at the Spearfish Senior Center for Souper Starz Dinner. We have over 100 people in attendance. Together, we raised an amazing total of \$3,225 to support our community! This money went directly to the local nonprofits. Next Souper Starz will be March 18<sup>th</sup> at 6PM. This event is open to the public and admission is \$10.

Looking for a place to hold your meeting or event? Our building can be rented for a reasonable fee. Contact the office to reserve a date!

## THANK YOU TO EVERYONE WHO RENEWED THEIR MEMBERSHIP FOR 2025!

As many of you know, our Senior Center is non-profit 501(c)(3) organization. We strive to keep the cost of our membership at a minimum. The money from annual memberships supports our many projects & programs which do not create revenue on their own. Your support of our Senior Center means so much to us all! Thank you to everyone who continues to be a member!

Membership dues are \$35 for 2025. Annual Membership is from Jan-Dec 2025.

**Welcome New Members:**  
Margaret Kleinsasser, Ardith Beveridge, Larry & Lee Ann Bell, Beatrix Merigold, Catherine Polley, Carolyn Johnson,

**Spearfish Senior Center Mission Statement:**  
The Spearfish Senior Center is a non-profit organization committed to providing recreational, social, and educational opportunities for adults over fifty years of age.

### Board of Directors

Ginger Childers, President  
Taffy Tucker, Vice President  
Jane Rutherford, Secretary

### Board Members

Doug Schmit Carol Hess  
Dennis Dahl Marla Loken  
Carol Vercoe LeRoy Lanphear

Alyce Harich, Treasurer  
Stephanie Crago, Executive Director



MEET • EAT • LISTEN • VOTE




**A dinner funding micro grants in your community.**

**WHEN: Tuesday March 18<sup>th</sup> 6-7PM**

**WHERE: Spearfish Senior Center**

A community crowdfunding dinner  
Open to the Public

**How it works:**

1. \$10 gets you soup and a vote. \$5 for students and children! Come eat dinner & support the dreamers in our community.
2. Listen to local people present about their dreams that need funding.
3. Each presenter has up to five minutes to share their ideas, nonprofit, business, etc.
4. The presenter with the most votes wins all of the money collected at the door!

**President's Message:**

**TEN COMMANDMENTS FOR SENIORS**

Talk to yourself. There are times when you need expert advice.

"In style" are the clothes that still fit.

You don't need anger management. You need people to stop irritating you.

Your people skills are just fine. It's your tolerance for idiots that needs work.

The biggest lie you tell yourself is: "I don't need to write that down. I'll remember it."

"On time" is when you get there.

You've noticed people your age are much older than you.

Aging has slowed you down, but it hasn't shut you up.

Growing old should have taken longer.


You still haven't learned to act your age and I hope you never will.

*Ginger Childers*



Keep using your Safeway cards! Last month we made \$180 just from people using their cards!! THANK YOU!!!

Safeway Community Giving Cards are FREE! Cards can be loaded with any amount up to \$500 & refill when needed. The card can be used to buy groceries AND gas. 5% of purchases made at ANY Safeway or Albertsons using the Community Giving Card is then returned to the Senior Center. This is a great fundraiser for our Center.



**TECH HELP FOR SENIORS AVAILABLE:**

- ❖ Every Tues in FEB 9AM-11AM with Lindsay
- ❖ Tues FEB 4<sup>th</sup> 1-3PM with Bennett – must be signed up for this session (605-642-2827)





# Member Spotlight *Becky Loll*

### Where did you grow up?

I was born in Isabel SD. We moved to Belle Fourche, and I attended 1<sup>st</sup> grade there. My dad purchased a barber shop in Lead, and I grew up there graduating in 1974.

**Family Members:** I have been happily married to my husband Joe for 47 years. Together we have 4 children and 6 grandchildren. Our youngest Parker is 2 and was born with Cystic Fibrosis. I'm happy to say he is doing well thanks to expensive modern medicine. He is an absolute doll and quite the little fighter! I encourage people to donate to this cause to find cure for this disease.

**Past Work:** I have been a carpenter's assistant, a re-appraiser for Lawrence County, construction worker (laborer not flag girl! Ha), and a dept manager at Spearfish Wal-Mart for 28 years. I retired in 2018.

**Hobbies/Interests:** I love playing cards, reading, baking bread, selling my sons beadwork, and most of all spending time with my grandchildren!

**Current involvement in the Center:** I was instrumental in starting a Texas Holdem poker game at the Center. I'm happy to say we have about 9 regular players. I also give rides to members when needed and I buy lots of shoes and items at the 'Senior Mall' ha!

**How long have you been involved at the Senior Center?** I have been a member for about 5 years thanks to my friend Darline. She talked me into learning the card game Pitch there and joining!

**What do you love most about the Senior Center:** By far my favorite thing is the people! Joining has enriched my life with the many new friends I've made. We have to much fun playing cards & laughing, teaching, and supporting one another!

**Something we may not know about you:** I was one of only 2 women construction workers that helped build the sewage treatment plant in Deadwood. I learned to tie rebar, grouted cement, build walls, etc. It was one of the toughest, dirtiest jobs I ever had. I made \$6 an hour. Thought I was rolling in high cotton! I could also kick a football further than any of my brother's friends!

FEBRUARY 2025

Don't forget to shop our greeting cards. We have a wide variety of Valentine's Day cards along with other holidays. Total made for the year in greeting cards was \$916! Thank you to Barb Hargis and Judy Woodworth for all your help in keeping our cards looking neat and tidy and up to date!

We thank the family & friends of Cecilia Keller, and Kenneth & Lola Pascoe for the Memorial Donations. We also thank the Shirley and Johnnie Johnson Family for the continued donations in Memory of Evelyn Dingeman.

## Scoreboard December 2024

Whist	Betty Weyrauch	50
Hand & Foot	Vina Dodson	16,585
10 Point Pitch	Becky Loll	180
Bridge	Karen Carmichael	5,630
BUNCO	Mary Nygaard	563
Wed Pinochle	Wendy Mayer	8,380
Wed Mahjong	Sheila Kenny	160
Wed Mahjong PM	Laura Scholten	430
Texas Holdem	Connie Wagner	200
Dominoes	Penney Williams	192
Cribbage	Jean Dirk	90
Thur Dup Bridge	Mary Sampson/Bob G	70.83
Fri Pinochle	Phil Edwards	7,435
Fri Mahjong	Mary Wilson	560
Sat Dup Bridge	Mary Sampson/Bob G	72.50

**Spearfish Senior Service Center**  
1306 N 10<sup>th</sup> St  
Spearfish, SD 57783-1530  
605-642-2827

Nonprofit Org  
US Postage Paid  
Spearfish, SD  
Permit #10

Address Service Requested



Check out our Facebook page & give us a 'Like'. Search for us under 'Spearfish Senior Center'. Lots of pictures & updates posted!

Spring Rummage Sale Coming Up SOON!  
March 13-15<sup>th</sup> 2025

[www.spearfishseniorcenter.com](http://www.spearfishseniorcenter.com)

Spearfish Senior Center Newsletter

Sponsored By:

Peaceful Pines Senior Living